



Organizing Authority
Federación de Vela de Puerto Rico
JUNE 11 - 12, 2016

SAILING INSTRUCTIONS

1. RULES

- 1.1** This Regatta will be governed by the rules as defined in The Racing Rules of Sailing (RRS). To the extent permitted by Part 7 of the RRS, specific provisions of the RRS may be modified, altered or made inoperative by the Notice of Race (NOR) or the Sailing Instructions (SI).
- 1.2** The International Optimist Dinghy Association Class Rules, the Rules of the Laser Class Association, the Rules of the Hobie Cats Association, the Rules of the Sunfish Class International Racing Association, the Class Rules of the Club 420 Association, and the Puerto Rico Sailing Federation's Environmental Protocol will apply, except as modified, altered or made inoperative by the NOR or the SI, to the extent permitted by such rules.
- 1.3** If there is a conflict between languages the English text will take precedence.

2. ADVERTISING

- 2.1** ISAF regulation 20.4 applies. Boats may be required to display advertising chosen and supplied by the Organizing Authority (OA) in all or any of the races, if applicable.

3. NOTICES TO COMPETITORS

- 3.1** Notice to competitors will be posted on the official board located at Regatta Headquarters.

4. CHANGES IN THE SAILING INSTRUCTIONS.

- 4.1** Any changes to the Sailing Instructions will be posted on the Official Board before 0800 hours on the day it will take effect, except that any change to the schedule will be posted by 2000 hours on the day before it will take effect.
- 4.2** Additional changes to these Sailing Instructions can be made on the water by the Race Committee. When a change to the Sailing Instructions will be made on the water the Race Committee Signal boat will display the Lima Flag (L) with one sound.

When this signal is displayed boats shall come within hail of the Race Committee Signal Boat to receive instructions.

5. SIGNALS MADE ASHORE

5.1 Signals made ashore will be displayed as follows:

5.1.1 Optimist Advanced, Laser, and Sunfish classes from the right dock light post of dock 85 at Puerto del Rey Marina.

5.1.2 Hobie Cat 16 from the flag staff next to Puerto Del Rey Restaurant. Signals made from this location for the Hobie Cat 16 class will be accompanied by the Hobie Cat class flag.

5.1.3 Optimist Green fleet from the 20 x 20 Tent Post in the vicinity of dock 85 at Puerto Del Rey Marina.

5.2 When Flag "AP" is displayed ashore, "1 minute" is replaced with not less than "Sixty (60) minutes" after the "AP" is lowered for all classes except Optimist Green fleet for which "1 minute" is replaced with not less than "Thirty (30) minutes" after the "AP" is lowered. This changes RRS "Race Signals".

6. RACE SCHEDULE

6.1 Races will be back to back with a possible lunch break in between.

6.2 First warning will be at 1100 hours on both Saturday and Sunday.

6.3 No warning signal will be hoisted after 1600 hours on Saturday and no warning signal will be hoisted after 1400 hours on Sunday.

6.4 For the Optimist Green fleet there will be a **mandatory** daily competitors meeting at 0930 hours in the vicinity of dock 85 at Puerto Del Rey Marina.

7. CLASS FLAGS:

Optimist Advanced	White Flag with Optimist Insignia
Laser (4.7, and Radial)	White Flag with Laser Insignia
Hobie Cat 16	White Flag with Hobie Cat Insignia
Sunfish	White Flag with Sunfish Insignia
Club 420	White Flag with Club 420 Insignia
Optimist Green	Green Flag with Optimist Insignia

8. RACING AREA

- 8.1** Attachment I shows the location of the racing area on the waters adjacent to Isla de Ramos for the Optimist Advanced, Laser, Hobie Cat, Sunfish, and Club 420 fleets.
- 8.2** Attachment III shows the location of the racing area on the waters within Puerto Del Rey Marina for the Optimist Green fleet.

9. MARKS

- 9.1** All marks of the courses will be orange inflatable buoys.
- 9.2** Change marks when changing the next leg of the course (RRS 33) will be the original marks.

10. THE COURSES

- 10.1** Attachment II shows the courses and mark layout for the Optimist Advanced, Laser, Hobie Cat, Sunfish, and Club 420 fleets.
- 10.2** Attachment IV shows the courses and mark layout for the Optimist Green fleet.
- 10.3** For the Optimist Advanced, Laser, Hobie Cat, Sunfish, and Club 420M courses mark G is a leeward mark in the form of a gate (marks S and P), boats shall pass through the gate between S and P. This gate may be replaced by a single mark, Mark G to be left to port. When there is a gate, boats shall sail between the gate marks from the direction of the previous mark and round either gate mark.
- 10.4** All marks are to be left to port except G when it is a mark in form of a Gate.
- 10.5** The course number designation for the course to be sailed will be displayed no later than the warning signal from the Race Committee Signal Vessel by displaying the designated numeral pennant.
- 10.6** For the optimist Green fleet the Starting and Finish line shall be considered an obstruction unless starting or finishing. Boats shall not sail through the start and/or finish line unless they are starting or finishing.

11. THE START

11.1 OPTIMIST ADVANCED, LASER, HOBIE CAT, SUNFISH, AND CLUB 420 FLEETS:

- 11.1.1** The starting line will be between a staff displaying an orange flag on the Race Committee signal boat at the starboard end and the course side of a nearby orange mark or staff displaying an orange flag on the Race Committee mark boat on the port end.
- 11.1.2** To alert boats that a race or sequence of races will begin soon, the orange starting line flag will be displayed with one sound signal at least one (1) minute before a warning signal is made.
- 11.1.3** The orange flag(s) on the staff(s) designating the starting line may be removed (with no sound signal) when the race management team determines that it will

not promptly (usually within 5 minutes of the prior start) make the warning signal for the next race in a sequence of races.

11.1.4 Optimist White, Blue and Red will be starting together.

11.1.5 Boats whose warning signal has not been made shall avoid the starting area.

11.1.6 If flag U has been displayed as the preparatory signal, no part of a boat's hull, crew, or equipment shall be in the triangle formed by the ends of the starting line and the first mark during the last minute before her starting signal. If a boat breaks this rule and is identified, she shall be disqualified without a hearing but not if the race is restarted or re-sailed or postponed or abandoned before the starting signal. This changes rules 26, 63.1, and Race Signals.

11.1.7 There will not be a specific order for the fleets to start.

11.2 OPTIMIST GREEN FLEET:

11.2.1 The starting line will be between a staff displaying an orange flag on the Race Committee signal boat at the starboard end and the course side of a nearby yellow mark on the port end.

11.2.2 To alert boats that a race or sequence of races will begin soon, the Race Committee will make repetitive sound signals at least one (1) minute before a warning signal is made.

11.3 A boat starting later than 4 minutes after her starting signal will be scored Did Not Start (DNS). This changes RRS 35, A4, and A5.

12. FINISH

12.1 For the Optimist Advanced, Laser, Hobie Cat, Sunfish, and Club 420 fleets the finishing line will be between a staff displaying a blue flag on a Race Committee signal boat at the port end and the course side of a nearby orange mark or staff displaying a blue flag on the Race Committee mark boat on the starboard end.

12.2 For the Optimist Green fleet the finishing line will be between a staff displaying a blue flag on the Race Committee signal boat at the starboard end and the course side of a nearby yellow mark on the port end.

12.3 Boats that have finished shall clear and keep clear of the finishing area.

13. TIME LIMIT

13.1 OPTIMIST ADVANCED, LASER, HOBIE CAT, SUNFISH, AND CLUB 420 FLEETS:

13.1.1 The time limit for each race will be sixty (60) minutes. Boats failing to finish ten (10) minutes after the first boat in their fleet will be scored DNF. This changes RRS 35.

13.2 OPTIMIST GREEN FLEET:

13.2.1 The time limit will be thirty (30) minutes for the first boat to sail the course and finish. Boats failing to finish within ten (10) minutes after the first boat sails the

course and finishes will be scored Time Limit Expired (TLE) without a hearing. The Score for boats scored TLE shall be the number of finishers plus one. This changes rules 35, A 4.1, A5 and A11.

13.2.2 To alert boats that the time limit has expired, the Race Committee may lower the orange line flag on the Race Committee signal boat.

14. PROTEST

14.1 A boat may not protest under SI 15 or 16. This changes Rule 60.1(a).

14.2 In addition to the requirements of RRS 61 all boats intending to protest shall inform the Race Committee Finish Boat of their intentions to protest as soon as reasonably possible after she finishes that race. This adds to RRS 61.

14.3 All protest shall be filed at Regatta Headquarters no later than sixty (60) minutes after the Race Committee Signal Vessel docking time. The docking time (beginning of protest time) will be posted on the official notice board.

14.4 Protest will be heard in the order posted or as determined by the Protest Committee. The time and place of protest hearings will be posted on the Official Board within (30) minutes after the end of protest time.

14.5 On the last day of the regatta a request for reopening a hearing shall be delivered within the protest time limit if the party requesting reopening was informed of the decision on the previous day or no later than 30 minutes after the party requesting reopening was informed of the decision on that day. This changes rule 66.

15. SAFETY

15.1 Adequate flotation device (life jackets) shall be worn and properly secured at all times while the competitor is in the boat, except temporarily while changing clothing. This changes the preamble of Part IV and RRS 40.

15.2 Each optimist must have at least one bailer properly tied to the hull.

15.3 Each optimist shall be equipped with a buoyant painter appropriate for towing, at least (12) feet in length.

15.4 Prior to the 1st start of the day each boat shall check in by sailing close to the stern of the Race Committee Signal Vessel, and shall hail her/his name and sail number.

15.5 When a competitor leaves the racing area before the end of each racing day, he/she shall notify the race committee or an official boat before retiring.

15.6 Competitors in need of assistance should blow the whistle and/or attract attention by waving hands over their heads.

16. SUPPORT BOATS

16.1 Parents and other support personnel shall not communicate, in any fashion, with competitors while they are racing except in case of emergency or as indicated in

16.2. Parents and support boats not coaching shall keep well clear (a minimum of 100 ft.) of any boat racing.

16.2 Coaching of Optimist Green Fleet skippers while racing is permitted, however coaching shall be limited to skippers in the bottom half of the fleet in any given race. Coach boats shall neither create wakes nor otherwise interfere with competitors. Coaches shall provide fair and consistent support to all competitors, not just their team and/or sailor(s).

17. PENALTIES

17.1 For the Optimist Advanced, Laser, Hobie Cat, Sunfish, and Club 420 fleets Classes, RRS 44.1 and RRS 44.2 are changed so that only one turn, including one tack and one gybe, is required.

17.2 Any boat retiring shall advise the Race Committee at the earliest opportunity. Failure to do so may, following a hearing, result in disqualification from the regatta or such other penalty as the Jury deems equitable.

17.3 Except for breaches of Parts 1 and 2 of the RRS, the Jury may apply any penalty that they deem equitable.

17.4 Any boat failing to check-in for its first race of the day, in accordance with 15.4, shall be given a 3 point penalty and scored CNF. She shall receive a score equal to the score she would have received without this penalty increased by three (3) for its first race of that day. This changes RRS Appendix A5 and A11.”

17.5 An Optimist Green fleet boat scored TLE shall receive a score, without a hearing, equal to one more than the number of finishers in the race she received the TLE. This changes RRS Appendix A5 and A11.”

17.6 A boat that does not take a penalty in accordance with RRS 44 or 17.1 may accept a 30% penalty before the protest hearing provided there was no damage or injury and the boat did not gain a significant advantage.

17.7 When a percentage penalty is imposed, it shall be calculated as the percentage of the number of entrants in the class, the number shall be the whole number (rounding 0.5 upward).

17.8 The Race Committee and Jury will be taking notes on any misconduct to the RRS, including pumping, rowing, touching the buoys, sportsmanship, fair racing and others.

18. SCORING

18.1 A minimum of one (1) race will constitute a series.

18.2 When fewer than five (5) races have been completed, a boat’s series score will be the total of her race scores.

18.3 When from five (5) to ten (10) races have been completed, a boat’s series score will be the total of her race scores excluding her worst score.

18.4 In the event that ten (10) or more races have been completed, a boat's series score will be the total of her race scores excluding her two (2) worst scores.

19. PRIZES

19.1 Class trophies will be awarded to the first 3 boats in each class. One overall trophy and one Best Female trophy will be awarded for the Optimists Advanced fleet.

19.2 All Optimist Green fleet competitors will receive a medal in recognition of their participation.

19.3 Cash prizes will be distributed to the participating classes in the following manner:

	1st Place	2nd Place	3rd Place
Hobie 16 Class A	\$300	\$200	\$100
Hobie 16 Class B	\$100	\$75	\$50
Laser Standard	\$100	\$75	\$50
Club 420	\$100	\$75	\$50
Laser Radial	\$100	\$75	\$50
Laser 4.7	\$100	\$75	\$50
Sunfish	\$100	\$75	\$50

The Organizing Authority reserves the right to redistribute the above prizes based on the actual classes which compete, the number of participants in each class, and/or the number of races in which the participant competed.

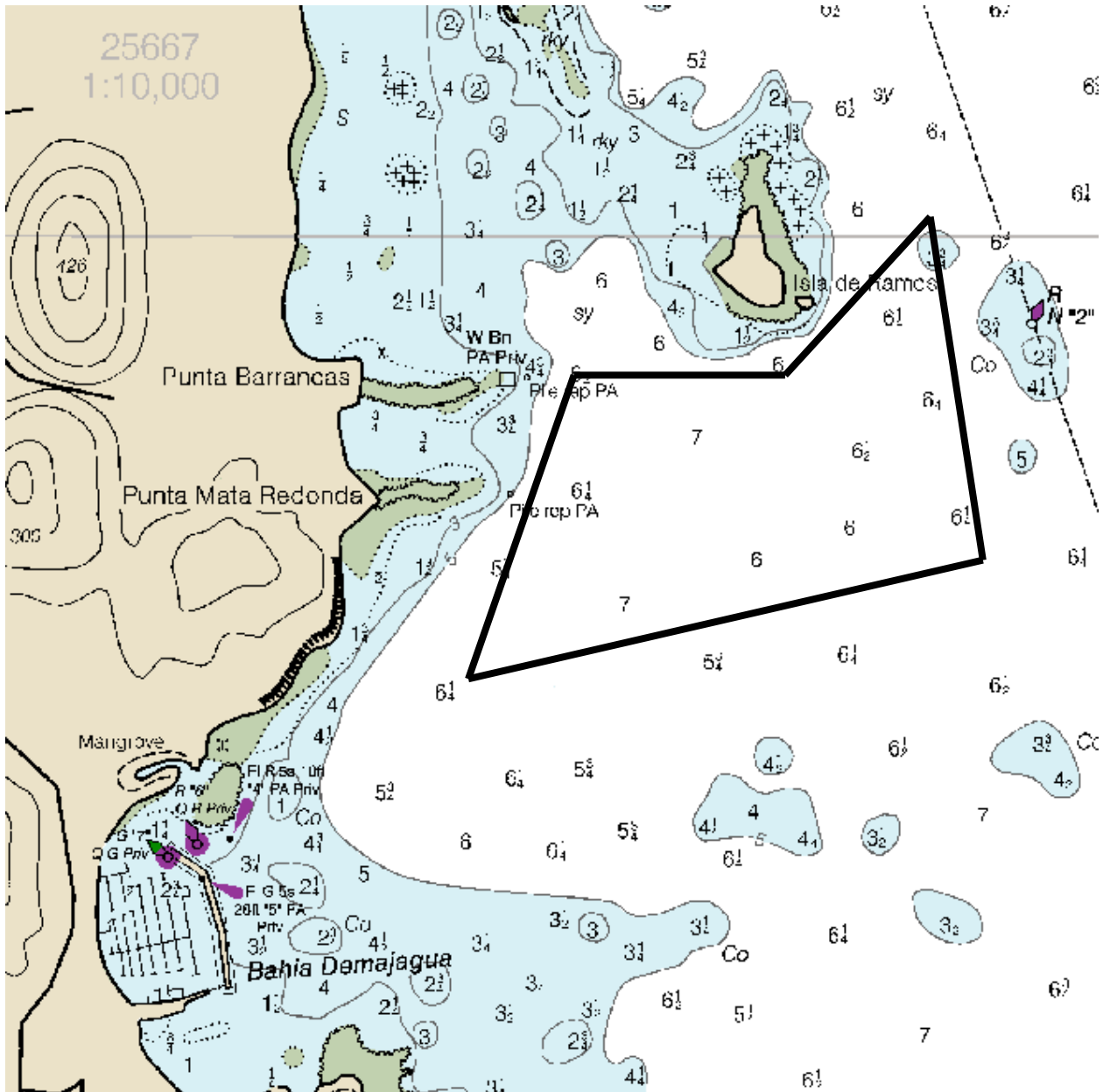
20. DISCLAIMER OF LIABILITY

20.1 Competitors agree to be bound by the Racing Rules of Sailing (RRS), by the Sailing Instructions and the Notice of Race. Competitors agree to take any and all responsibility for the nautical qualities of their vessels, the rigging, the crew's ability and the safety equipment. Competitors also agree to take any and all responsibility for damages caused to third persons (bodily injury included but not limited thereto) or their belongings, to themselves (bodily injury included but not limited thereto) or to their belongings, ashore and at sea as a consequence of their participation in the regatta, relieving of any responsibility The Federación de Vela de Puerto Rico Organization, Puerto Del Rey Marina, and all persons involved in the organization under whatever qualification. Competitors are to be acquainted with Racing Rules of Sailing Part 1 Fundamental Rule 4: "The responsibility for a boat's decision to participate in a race or to continue racing is hers alone". In any case, competitors agree that The Federación de Vela de Puerto Rico Organization, the sponsors and their agents, have no responsibility for loss of life or injury to members or others or for the loss of, or damage to any vessel or property. As part of the registration

process, each individual participating crewmember will be required to sign a declaration accepting this disclaimer of liability.

- 20.2** All competitors must complete and delivery the "Waiver Form" to the Regatta Headquarters, by 1800 hours on Friday June 10th, 2016. The "Waiver Form" is available under the Documents & Forms link in the Yacht Scoring website.

Attachment I: Racing Area



Attachment II: Courses

Class	Course 1	Course 2
Hobie Cat 16/C 420	S – M1 – G – F	S – M1 – G – M1 – G – F
Laser/ Sunfish	S – M2 – G – F	S – M2 – G – M2 – G – F
Optimist	S – M3 – G – F	S – M3 – G – M3 – G – F

●
M1

●
M2

●
M3



● **G** ●
S P

Attachment III: Optimist Green Fleet Racing Area



Attachment IV: Optimist Green Fleet Courses

Green Fleet Courses	
1	S - 1 - 3 - F
2	S - 1 - 3 - 1 - 3 - F
3	S - 1 - 2 - 3 - F



START/
FINISH

